

# PUBLIC ONLINE AUCTION

INSPECT ONSITE AND BID ONLINE

## METAL FABRICATION AND CNC MACHINE SHOP

ONLINE AUCTION CLOSING: TUESDAY, FEBRUARY 28 STARTING AT 10:00 AM MST

INSPECTION: MONDAY, FEBRUARY 27 FROM 9:00 AM TO 3:00 PM MST

LOCATION: 3881 GW BUSH AVENUE, WELLINGTON, CO 80549



2013 THERMAL DYNAMICS DMC-3000 PLASMA CUTTER, LINCOLN ELECTRIC ROBOTIC WELDING CELL, UNI-HYDRO 80-TON IRONWORKER, 2012 HAAS DS-30SS TURNING CENTER, SWI & SHARP VERTICAL MILLS, HYD-MECH S-20A HORIZONTAL BAND SAW, TIMESAVERS 6025MT SANDER, 2008 EPILOG LASER, GEMA POWDER COATER, JPW HEAT TREAT OVEN, LINCOLN WELDERS, AIR COMPRESSORS, CLARK ELECTRIC FORKLIFT, ANVER VACUUM LIFT, FARMING EQUIPMENT AND RELATED ITEMS



**UNITED**  
**ASSET SALES**  
ROY GAMITYAN, AUCTIONEER

OFFICE 818.264.4232 | ROY@UNITEDASSETSALES.COM

IN CONJUNCTION  
WITH:

**AMA**AUCTIONS.NET  
www.amauctions.net  
150 MARTIN STREET LONGMONT, CO

**WWW.UNITEDASSETSALES.COM**

# PUBLIC ONLINE AUCTION

INSPECT ONSITE AND BID ONLINE

## METAL FABRICATION AND CNC MACHINE SHOP

### ONLINE AUCTION CLOSES:

TUESDAY, FEBRUARY 28 STARTING AT 10:00 AM MST

### INSPECTION:

MONDAY, FEBRUARY 27 FROM 9:00 AM TO 3:00 PM MST

### INSPECTION LOCATION:

3881 GW BUSH AVENUE, WELLINGTON, CO 80549

### TERMS OF PAYMENT:

BANK WIRE TRANSFER ONLY. FULL PAYMENT MUST BE MADE NO LATER THAN 24 HOURS OF WINNING BID.

### REMOVAL:

ALL ITEMS MUST BE REMOVED NO LATER THAN TUESDAY, MARCH 7. NO EXCEPTIONS. PREPPING, REMOVAL, LOADING & TRUCKING IS THE RESPONSIBILITY OF THE BUYER.

### BUYER'S PREMIUM:

18% FOR ALL PURCHASES.



## MACHINE SHOP EQUIPMENT

2012 HAAS DS-30SS TURNING CENTER, HAAS CNC CONTROL, DUAL SPINDLE, LIVE TOOL, TOOL PROBE, TOOL SETTER, PARTS CATCHER, AIR BLAST, THROUGH TURRET COOLANT, SWING OVER BED: 31.75", SWING OVER CROSS SLIDE: 20.75", TURNING DIAMETER: 16", TURNING LENGTH: 26.11", X-AXIS TRAVEL: 12.5", Z-AXIS TRAVEL: 26", SPINDLE SPEED (MAIN/SUB): 4,800 RPM, SPINDLE BORE: 2.44", SPINDLE NOSE (MAIN/SUB): A2-6/A2-5, SPINDLE MOTOR (MAIN/SUB): 30/20 HP. SERVO TIME: 8,168 HOURS, MOTION TIME: 3,241 HOURS, SPINDLE TIME: 1,975 HOURS, TOOLING: (4) LIVE FACE, (4) MILL CROSS DRILL, (1) DOUBLE TURN, (3) BORING BAR, (1) DOUBLE ID HOLDER, (3) SINGLE ID HOLDERS, (3) OD TOOL HOLDERS, (1) 1" ID TOOL BLOCK, (1) 1-1/4" ID TOOL BLOCK, ROYAL COLLET CHUCK (16C), CHIP CONVEYOR, DUAL FOOT PEDALS, S/N 3091535

SHARP KNEE MILL, 9" X 50" TABLE, 60-4,500 RPM, KURT POWER LOCK DRAWBAR, PROTOTRAK MX3 CONTROL, THUMB DRIVE, KOOL MIST SPRAYER, (2) 6" MILL VISES & CLAMPING SUB-PLATE, S/N 50122012

SWI TRAK QUIK CELL QCM-1 3-AXIS BED MILL, 14" X 20" TABLE, TRAK QMV CONTROL, RS-232, KURT POWER DRAW BAR, KURT 6" ANGLE LOCK, S/N 014BH11316

LEBLOND REGAL ENGINE LATHE, 13" X 20" CC, 8" 3-JAW CHUCK, TAPER ATTACHMENT, S/N B6262

WILTON 24210 BELT & DISC SANDER, S/N 7110042

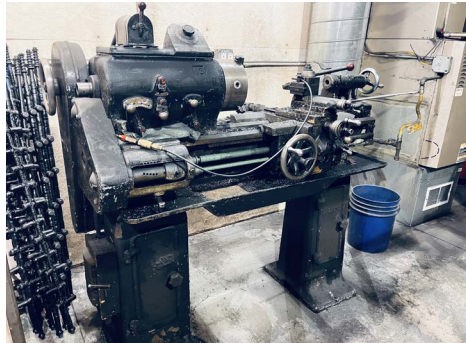
CHICAGO A1-17FP DRILL PRESS, S/N 55263

JET AP-5 ARBOR PRESS, S/N 90440001

2022 DAREX V-390 DRILL SHARPENER, WORK LIGHT, S/N 00A

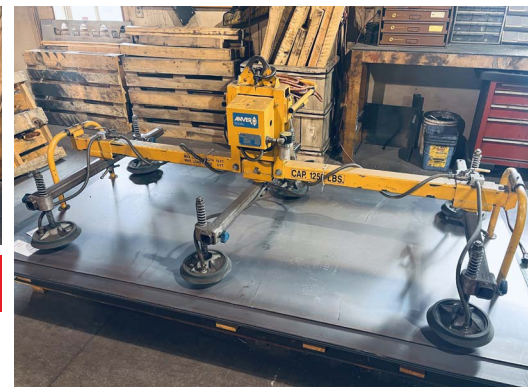
2002 MEMOLI EUREKAMATIC PLATE BENDER, S/N 418

TOOLBOXES, TOOLING, VISES, TOOLS, METAL MATERIAL AND RELATED ITEMS



## MATERIAL HANDLING

2000 ANVER E150M6-86-3/44 VACUUM LIFTER, 1,250 LB CAPACITY, 6' X 10' LOAD SIZE, S/N 6061



## REGISTER TO BID ONLINE NOW!

FOR COMPLETE SALE INFO: 818.264.4232  
VISIT: [WWW.UNITEDASSETSALES.COM](http://WWW.UNITEDASSETSALES.COM)  
EMAIL: [ROY@UNITEDASSETSALES.COM](mailto:ROY@UNITEDASSETSALES.COM)

ONLINE BIDDING PROVIDED BY

# BidSpotter



**UNITED**  
ASSET SALES  
ROY GAMITYAN, AUCTIONEER

[WWW.UNITEDASSETSALES.COM](http://WWW.UNITEDASSETSALES.COM)

23945 Calabasas Rd., Ste. 209, Calabasas, CA 91302

Office 818.264.4232 | [roy@unitedassetsales.com](mailto:roy@unitedassetsales.com)

ROY GAMITYAN, AUCTIONEER  
CA Bond# 63388305

# FABRICATION & WELDING EQUIPMENT

**2013 THERMAL DYNAMICS DMC-3000 PLASMA CUTTER, ICNC XT211 AUTOMATION PROCESS CONTROL, CRT, VICTOR ULTRA-CUT 200XT 3000 POWER SOURCE, 3000 WATT, W/ GAS SEPARATOR, 10'5" X 64" TABLE, S/N US1339026978**

**UNI-HYDRO 80-TON IRONWORKER, MODEL 80-24, 6" X 6" X 1/2" CAPACITY, S/N 3PS073SX**

**TIMESAVERS 6025 MT WIDE BELT SANDER, SERIES 60, CAPACITY: 24" BELT, SINGLE SIDED, DIMENSIONS: 48" X 48" X 68", WEIGHT: 1,800 LB, S/N 28202C**

**HYD-MECH S-20A HORIZONTAL BAND SAW, SERIES II, MITSUBISHI GOT 2000 CONTROL, FULLY AUTOMATIC, 90 DEGREES: 13" X 18" (RECTANGULAR), 13" (ROUND). 45 DEGREES: 13" X 10-3/4" (RECTANGULAR), 12" (ROUND). 30 DEGREES: 13" X 7-3/4" (RECTANGULAR), 8-1/2" (ROUND). BLADE SIZE: 1" X 14" X 10", BLADE DRIVE: 5 HP VFD, VOLTAGE: 208/240/480/575 VOLT, BLADE SPEED: 75-330 SFM, COOLANT CAPACITY: 12 GALLONS, WORKLOAD: 5,000 LB, TABLE HEIGHT: 31", DIMENSIONS: 93" X 86" X 52", WEIGHT: 3,800 LB, 20" ROLLER FEED TABLE, COOLANT SYSTEM, S/N 80206800FD**

**2008 EPILOG LEGEND 36EXT LASER ENGRAVER, 9000 SERIES, CLASS 3R LASER PRODUCT, 120 WATT, 36" X 24" ENGRAVING AREA, 12" MAX MATERIAL THICKNESS, S/N 9120-0812383624R**

**2004 LINCOLN ELECTRIC E-CELL ROBOTIC WELDING CELL, FANUC 6-AXIS ROBOT 100IB W/ RJ3IB CONTROLLER, CIRCULAR TABLE W/ FIXTURING CLAMPS, LINCOLN 355M POWER WAVE, S/N E04600344**

**ISCO TUBE SHARK II BENDER, RAM CAPACITY: 10 TON, BENDING ACCURACY: +/- 1/4 DEGREE, BENDING PRECISION: +/- 1/8 DEGREE, BEND ANGLE RANGE: 0-180 DEGREES, MINIMUM DISTANCE BETWEEN BENDS (SAME PLANE): 0", MINIMUM DISTANCE BETWEEN BENDS (OUT OF PLANE): 2"**

**MILLER KJ06 SPOT WELD TIMER, 18" ARM**

**LINCOLN ELECTRIC POWER MIG 350MP WELDER, S/N U1131107227**

**LINCOLN ELECTRIC 200-MCPL PORTABLE WELDING FUME EXTRACTOR, S/N M2570940012**

**WELDING TABLE & WELDING SUPPLIES**



## FINISHING EQUIPMENT

**JPW WALK-IN CURING OVEN, DIMENSIONS: 46" X 48" X 71.5", MAX TEMP: 500 DEGREES, 2,000 WATT**

**JPW BAKING OVEN, CAPACITY: 48" X 48" X 72", MAX TEMP: 450 DEGREES, 500 WATTS, (6) ROLLER RACKS**

**ROCKY MOUNTAIN CLEANING SYSTEMS 110SS PARTS WASHER W/ RINSE STATION, TABLE DIAMETER: 24", HEIGHT: 28", 300 LB LOAD CAPACITY, 25 GALLON TANK CAPACITY, 2 HP MOTOR, S/N WU3224**

**PRECISION METAL WORKS 112SS ACID BASED PARTS WASHER, ID: 25" X 32", 30-GALLON CAPACITY, 3 HP MOTOR, 208V, 5,000 LB LOAD CAPACITY, ROTARY TABLE, S/N CV248205-00**

**ITW-GEMA POWDER COATING BOOTH, INSIDE DIMENSIONS: 48" X 48" X 72", OPTISTAR CG07 MIXER, W/ SPRAY GUN**  
**ALKOTA 420X4 PRESSURE WASHER, FLOW RATE: 3.6 GPM, PRESSURE: 2000 PSI, STEAM CAPACITY: 120 GAL/HOUR, VOLTAGE: 230V, MOTOR POWER: 5 HP, FUEL SOURCE: KEROSENE, FUEL TANK: 8 GALLONS, DIMENSIONS: 46" X 36" X 39", WEIGHT: 545 LB, HEATED, WAND & REEL, S/N 328T32**

## FUEL TANKS





# PUBLIC ONLINE AUCTION

INSPECT ONSITE AND BID ONLINE

## METAL FABRICATION AND CNC MACHINE SHOP

ONLINE AUCTION CLOSES: TUESDAY, FEBRUARY 28 STARTING AT 10:00 AM MST

INSPECTION: MONDAY, FEBRUARY 27 FROM 9:00 AM TO 3:00 PM MST

LOCATION: 3881 GW BUSH AVENUE, WELLINGTON, CO 80549

CALL FOR INFO: 818.264.4232 OR VISIT US ONLINE: WWW.UNITEDASSETSALES.COM



# UNITED

## ASSET SALES

ROY GAMITYAN, AUCTIONEER

WWW.UNITEDASSETSALES.COM

23945 Calabasas Road, Suite 209  
Calabasas, CA 91302

PRSRST STD  
U.S. POSTAGE  
PAID  
LOS ANGELES, CA  
PERMIT NO. 3389

# ATTENTION!

## PLANT MANAGER OR EQUIPMENT BUYER

ROY GAMITYAN, AUCTIONEER  
CA Bond# 63388305



### FORKLIFT

CLARK TM15S, ELECTRIC, 3,000 LB CAPACITY, 3-STAGE MAST, SIDE SHIFT, 188" LIFT HEIGHT, TRUCK HEIGHT: 84" W/ FORKS LOWERED, CUSHION TIRES, GNB FERRO ELECTRIC CHARGER



# PUBLIC ONLINE AUCTION

INSPECT ONSITE AND BID ONLINE

## METAL FABRICATION AND CNC MACHINE SHOP

ONLINE AUCTION CLOSES: TUESDAY, FEBRUARY 28 STARTING AT 10:00 AM MST

INSPECTION: MONDAY, FEBRUARY 27 FROM 9:00 AM TO 3:00 PM MST

LOCATION: 3881 GW BUSH AVENUE, WELLINGTON, CO 80549

### SKID STEER

JOHN DEERE 8875 ALL TERRAIN, GENERAL SPECS: LENGTH W/ BUCKET: 11.84', LENGTH W/O BUCKET: 9.34', WIDTH OVER TIRES: 5.76', GROUND CLEARANCE: 8", HEIGHT TO TOP OF CAB: 6.01', WHEELBASE: 4', CLEARANCE AT MAX LIFT AND DUMP: 8.09', REACH AT MAX LIFT AND DUMP: 30", TURN RADIUS FROM CENTER (MACHINE REAR): 69.25", TURNING RADIUS FROM CENTER (INCLUDING BUCKET): 82.75", ENGINE SPECS: 3 CYLINDERS, MAKE/MODEL: 2240/3029T, GROSS POWER: 64 HP, FUEL CAPACITY: 18.8 GALLONS, MAX SPEED: 12.1 MPH, OPERATING VOLTAGE: 12V, LOAD RATING: 2,352 LB, TIPPING ANGLE: 6,284 DEGREES, 48" LIFT OPTION, 72" LOADING BUCKET, BACKHOE ATTACHMENT, ROTOTILLER ATTACHMENT, S/N M08875X040231



### TRUCK & TRAILER

1958 FORD F600 GRAIN TRUCK, 8-CYLINDER GAS ENGINE, 4-SPEED MANUAL TRANSMISSION, SPRING SUSPENSION, 154" WHEELBASE, VIN: 560C8K42718

FLATBED TRAILER, 16' X 80", LOADING RAMP, DUAL AXLE, BUMPER PULL, SPARE TIRE, (2) 60" X 15" BED, LOAD RAMPS



1958