

THE INFORMATION CONTAINED IN THIS DRAWING IS THE SOLE PROPERTY OF MIRACLEAN ANY REPRODUCTION IN PART OR WHOLE WITHOUT THE WRITTEN PERMISSION OF MIRACLEAN IS PROHIBITED.

Process Description	Clean Rinse
Construction	Modular unit with enclosure; front loading with door Frame: stainless steel Tanks: 316 stainless steel Insulation: polyethylene Dress off: stainless steel
Electrical Requirements	Customer will supply 480V 3-phase to control panel
Control Panel	All electrical components are wired to the NEMA 12 control box which is mounted on the system unit.
Plumbing	Drains: ball valve plumbed to tank Feeds: 1/2" Customer will supply hook up from existing plumbing to these points located on the rear of the tank.

#1 - Clean Station	Work area: 14" DOT X 23" FB X 14" D (31 GALLON TANK) Overflow weir - one sided, saw toothed Drain Insulated Electric Heat: with controller to heat from ambient to 160 degrees F in 3 hours Ultrasonics: • 2000W, 25kHz, side-mounted, high efficiency immersible transducer arrays with dedicated solid state generators • 2000W, 40 kHz, bottom-mounted Agitation Filter/Sparger System: stainless steel sparger (skims surface to separate overflow weir), single chamber cartridge filter, air diaphragm pump Spray over Immersion: dual parallel side-mounted spray headers to provide spray over immersion
---------------------------	---

#2 - Hot Rinse Station with Spray over Immersion	Work area: 14" DOT X 23" FB X 14" D (24.3 GALLON TANK) Overflow weir - one sided, saw toothed Drain Insulated Electric Heat: with controller to heat from ambient to 160 degrees F in 3 hours Agitation Spray over Immersion: dual parallel side-mounted spray headers to provide spray over immersion. Customer supplied water Air Blow off: 2 side mounted air knives above the spray off. Customer supplied air Ultrasonics: 2000W, 40 kHz bottom mounted
---	---

Programmable Operation	Allen Bradley microprocessor with touch screen operation. *Requires a direct dial analog phone line for remote programming support*
-------------------------------	---

Instant Hot Water Heater	36 kW - * Sandvik to Plumb and Wire Hot Water Heater
---------------------------------	--

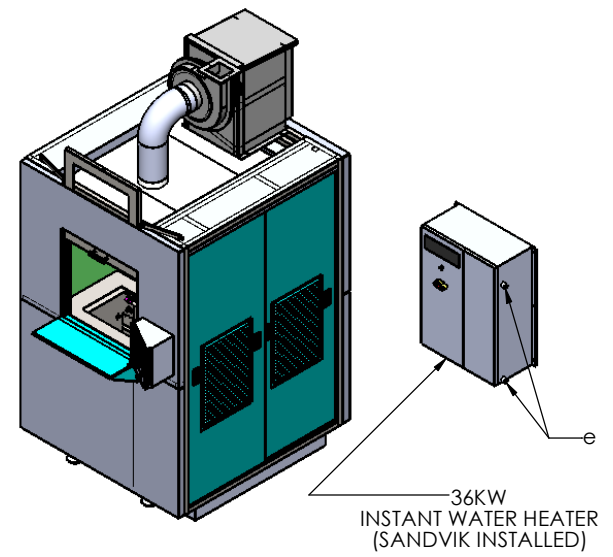
Steam Exhaust Blower	FIBERGLASS SCROLL AND WHEEL, MOTOR/BEARING BASE OF EPOXY-COATED STEEL
-----------------------------	---

Pump Module to Drain	Drain sump equipped with air diaphragm pump and level control
-----------------------------	---

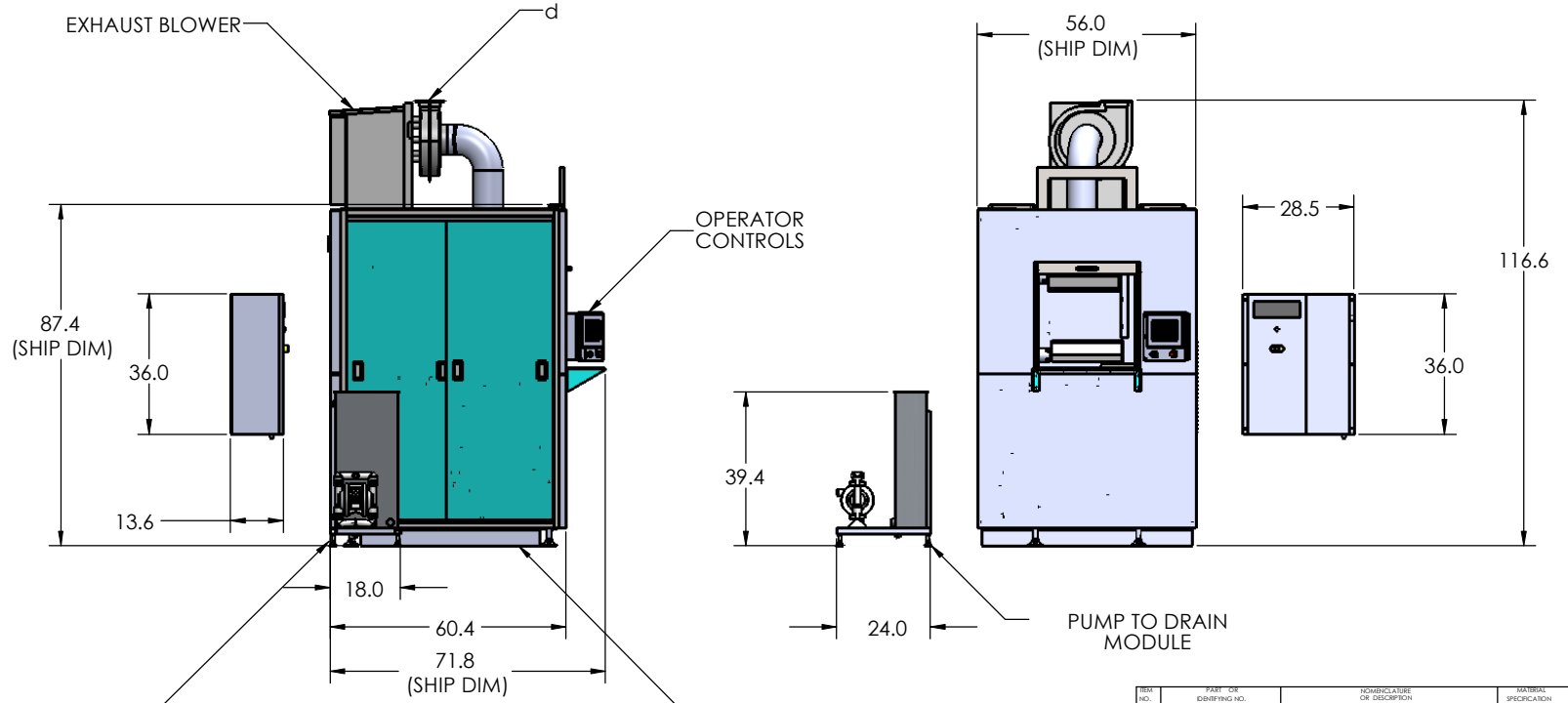
MIRACLEAN CLEAN / RINSE SYSTEM	
ELECTRICAL:	480V 3-phase 21 FLA w/ 25A DISC CIRCUIT BREAKER
COMP. AIR REQ:	75 PEAK SCFM @80PSI 23 AVE. SCFM
DI WATER REQ:	2-3 GPM @ 40-80 PSI
EXHAUST SYSTEM:	400CFM @ 2" (wg) SP
CONNECTIONS:	a) D.I. WATER 1/2" COMP. b) AIR: 3/4" NPT c) DRAIN: 1" NPT d) EXHAUST: 7 3/4"x 8 1/4" SQ. FLANGE

36kW INSTANT WATER HEATER	
ELECTRICAL:	480V 3-phase 45 FLA w/ DISCONNECT SIZED & SUPPLIED BY SANDVIK
PRESSURE RANGE:	10 MIN - 100 MAX PSIG
TEMP PERFORMANCE:	ΔT =121.2 °F @ 2GPM (36KW)
UNIT WEIGHT:	145 LBS
CONNECTIONS:	e) INTO / OUT - 1" MNPT f) PRV VALVE - 1/2" FNPT

REVISIONS				
ZONE	REV.	DESCRIPTION	DATE	APPROVED
	A	RELEASED	06/20/2011	



***SHIPPING DIMENTIONS AS NOTED
EXHAUST BLOWER REMOVED FOR SHIPPING**



UTILITIES (a,b,c connections)
EXIT REAR (OPPOSITE OPERATOR)
CONTAINMENT TRAY
HOLDS 100% OF LARGEST TANKS
ACCESSED FROM SIDES

TOLERANCES ARE:
FRACTIONS DECIMALS
+/- 1/32 .XXXX +/- .005
.XXX +/- .010
.XX +/- .020

ITEM NO.	PART OR IDENTIFYING NO.	DESCRIPTION OR IDENTIFICATION	MATERIAL SPECIFICATION	REV.
PARTS LIST				
SOLID MODEL ATTACHED		CAO GENERATED DRAWING. DO NOT MANUALLY UPDATE		
APPROVALS	DATE	TYPE NO.		
DRAWN: KWL	20JUN11	D0617111425		
ORD	REC'D	Sandvik Approval		
MATERIAL	PROJECT	M80653	REV. A-04	
SCALE 1:24	SHEET 1 OF 1			

○ APPROVED

SIGNED: _____ DATE: _____