

BIDITUP™ LIVE ON-SITE
AUCTIONS & APPRAISALS WORLDWIDE & WEBCAST

AUCTION

Tuesday, March 28, 2006
Beginning at 10:00 AM EST
3857 Nashua Drive
Mississauga, Ontario L4V 1R3 (Canada)

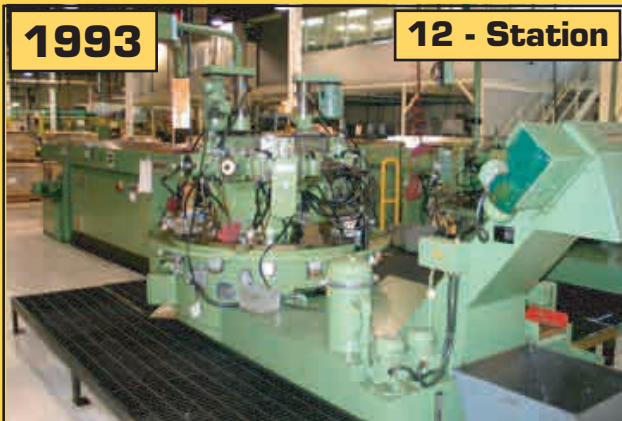


WEBCAST

Can't attend the auction in person?
 Bid live on www.BIDITUP.com

MULTI-MILLION DOLLAR, LATE MODEL HI-PRECISION CNC SWISS & MULTI-SPINDLE AUTOMATICS, CNC MULTI-AXIS TURNING, HYDROMATS, BROACHING & MACHINING FACILITY

QSS Manufacturing Corporation - Formerly Known as Jancee Screw Products



1993

12 - Station

Hydromat HW25-12 Rotary Transfer Machine

- ▶ Rotary Transfer Machines
- ▶ CNC Swiss Screw Machines
- ▶ Multi-Axis CNC Turning Centers
- ▶ (26) Multi-Spindle Automatics
- ▶ Broaching Machines
- ▶ CNC Lathe
- ▶ Lathes
- ▶ Centerless Grinders
- ▶ Cylindrical Grinder
- ▶ Hydraulic Surface Grinders
- ▶ Horizontal Mills
- ▶ Vertical Band Saw
- ▶ Horizontal Band Saw
- ▶ Tool Presetters
- ▶ Pin Punch
- ▶ Cutters/grinders
- ▶ Drill Presses
- ▶ Chip Cleaning & Processing Equipment
- ▶ Parts Washing System
- ▶ Inspection
- ▶ Dust/fume Collectors
- ▶ Rolling Stock
- ▶ Air Compressors/dryer
- ▶ Facilities
- ▶ And Much More



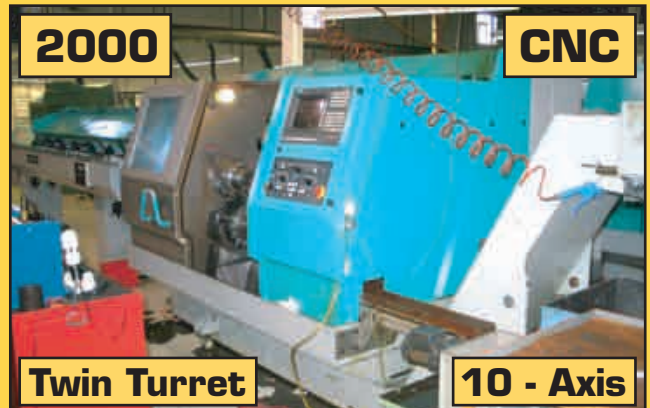
2000

CNC

Live Tooling

5 Available

Star SA-12/16 CNC Screw Machine



2000

CNC

Twin Turret

10 - Axis

Index G200BY CNC Turn/Mill Center

Sale in Conjunction with



BIDITUP AUCTIONS & APPRAISALS WORLDWIDE

www.BIDITUP.com

ROTARY TRANSFER MACHINES, CNC SWISS SCREW MACHINES



Hydromat HW25-12 Rotary Transfer Machine



Hydromat HW25-12 Rotary Transfer Machine



Hydromat Pro 20 Rotary Transfer Machine

ROTARY TRANSFER MACHINES

1993 Hydromat 12-Station Rotary Transfer Machine, MDL. HW25-12, 8,925,925 Cycles, Station 1: Cutoff, 2: 30/60 Drill, 3: Inverter, 4: 20/80 Drill, 5: 20/80 Drill, 6: 20/80 Drill, 7: 20/80 Milling, 8V: 20/80 Milling, 9: 20/80 Milling, 10V: 20/80 Milling, 11: 20/50 Threading, 12V: 20/80, S/N 230293-489

1991 Hydromat 12-Station Rotary Transfer Machine, MDL. HW25-12, 6,109,377 Cycles, Station 1: Cutoff, 2: None, Flange, 3: 20/50 Milling, 4H: Flange, 4Y: Flange, 5: 20/50 Milling, 6: Inverter, 7: None, 8: 30/60 PCM Turn, 9H: 20/50, 9V: Flange, 10: 20/50, 11: 20/80, 12: 20/50, S/N 290191-421

1988 Hydromat 12-Station Rotary Transfer Machine, MDL. HW25-12, 13,784,266 Cycles, Station 1: Cutoff, 2: 20/80, 3: 35/60QC Drill, 4: 30/60QC Drill, 5: None, Flange, 5V: 20/80QC Drill, 6: 20/80, 7: Inverter, 8: 20/80, 9: None, Flange, 10: None, Flange, 11: None, Flange, 12: 20/80 Drill, S/N 180388-296

2000 Hydromat 10-Station Rotary Transfer Machine, MDL. PRO 20, 560,168 Cycles, Station 1: Cutoff, 2: None, Flange, 3: 35/60QC PCM Turn, 4: 35/60QC PCM Turn, 5: 20 Recess, 6: 50/80, 7: Inverter, 8: 35/60QC PCM Turn/Drill, 9: 35/60QC PCM Turn/Drill, 10: 20 Series Threading, QC, S/N HW20-87

2000 Hydromat 10-Station Rotary Transfer Machine, MDL. PRO 20, 737,929 Cycles, Station 1: Cutoff, 2: 35/60QC, 3: None, Flange, 4: None, Flange, 5: Inverter, 6: None, Flange, 7: 30/60QC, 8: 30/60 Drill, 9: None, Flange, 10: None, Flange, S/N HW20-85

All Units Have Magazine Bar Loader, Hydraulic Packs, Chip Conveyor, Magnetic Separator, Cooling Filtration, Steel Walkway, 460 Volt, 3 PH., Pendant Control

(2) Delta Veromat Multi-Head Rotary Transfer Machine, S/N VE1636, VE1310

Machining Units: (2) 30/60 Units With Motors, (4) 20/80 Units With Motors, (2) 20/50 Units With Motors, (7) 20-Series Threading (Four With Quick Change), (1) 36/100 Recess Turn with Motor

Extra Tooling & Presetters

CNC SWISS SCREW MACHINES

(2) 2000 Star CNC Swiss Screw Machine, MDL. SA-12/16, 1/2" (5/8" OPT) Capacity, 3-Power Driven Tools, 5-Turning Tools, 4-Front Working Tools and 4-Backworking Tools, C-Axis, Main/Sub-Spindles Synchronous, Parts Catcher, Fanuc 18iT CNC Control, S/N 071145(052), 071130 (051), 1999 Iemca CH220/37 Hydraulic Magazine Bar Loader

(2) 2000 Star CNC Swiss Screw Machine, MDL. SA-12/16, 1/2" (5/8" OPT) Capacity, 3-Power Driven Tools, 5-Turning Tools, 4-Front Working Tools and 4-Backworking Tools, C-Axis, Main/Sub-Spindles Synchronous, Parts Catcher, Fanuc 18iT CNC Control, S/N 061180(48), 051193(40), 1999 Iemca CH112/37 Hydraulic Magazine Bar Loader

2000 Star CNC Swiss Screw Machine, MDL. SA-12/16, 1/2" (5/8" OPT) Capacity, 3-Power Driven Tools, 5-Turning Tools, 4-Front Working Tools and 4-Backworking Tools, C-Axis, Main/Sub-Spindles Synchronous, Parts Catcher, Fanuc 18iT CNC Control, S/N 051193(40), 1998 Iemca CH12/37 Hydraulic Magazine Bar Loader

1985 Citizen Cincom Twin Turret CNC Swiss Screw Machine, MDL. F20, 3/4" (20mm), 10-Tools (5-Tools/Turret), 10-Rotary Tool Positions, 1 Degree Indexing, Universal Long Part Attachment, Fanuc 3TC CNC Control, S/N 646, LNS 3.20.HS-4.8 Hydraulic Bar Feed

1988 Citizen Cincom Twin Turret CNC Swiss Screw Machine, MDL. F16, 5/8" (16mm), 10-Tools (5-Tools/Turret), 10-Rotary Tool Positions, 1 Degree Indexing, Universal Long Part Attachment, Fanuc OT CNC Control, Cincom CMBF 0616 Hydraulic Bar Feed, S/N 3266

1985 Citizen Cincom Twin Turret CNC Swiss Screw Machine, MDL. F16, 5/8" (16mm), Twin Turret, 10-Tools (5-Tools/Turret), 10-Rotary Tool Positions, 1 Degree Indexing, Fanuc 3TC CNC Control, S/N 1356, Manual Bar Feed

1985 Citizen Cincom Twin Turret CNC Swiss Screw Machine, MDL. F12, 1/2", 10-Tools (5-Tools/Turret), 10-Rotary Tool Positions, 1 Degree Indexing, Universal Long Part Attachment, Fanuc 3TC CNC Control, S/N 1543, LNS 3.16.HS.48 Hydraulic Bar Feed

1984 Citizen Cincom Twin Turret CNC Swiss Screw Machine, MDL. F10, 3/8", 8-Tools (4-Tools/Turret), Fanuc 2T CNC Control, S/N R-234, Ikura-Seiki Bar Top No. 10NHA Magazine Bar Loader

BAR FEEDERS TO BE OFFERED AS A PACKAGE AS WELL AS SEPARATELY

TO SCHEDULE AN AUCTION OR APPRAISAL

CALL 818.508.7034

CNC SWISS SCREW MACHINES, CNC TURNING CENTER



Star SA-12/16 CNC Swiss Screw Machine



Citizen Cincom F20 CNC Swiss Screw Machine



Citizen Cincom F16 CNC Swiss Screw Machine



Citizen Cincom F12 CNC Swiss Screw Machine



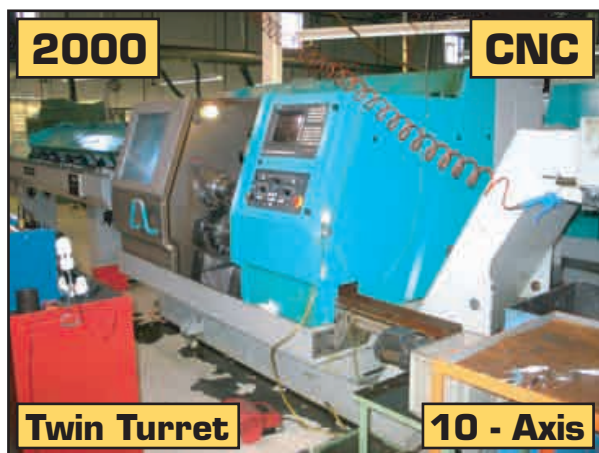
Citizen Cincom F10 CNC Swiss Screw Machine



Miyano BNC-34T CNC Turning Center

Can't Attend the Auction in Person? Bid Live Online at
www.BIDITUP.com

MULTI-AXIS CNC TURNING CENTERS, MULTI-SPINDLE AUTOMATICS



Index G200BY CNC Turn/Mill Center



Index G200 CNC Turn/Mill Center



Index ABC Speedline CNC Turn/Mill Center

MULTI-AXIS CNC TURNING CENTERS

2000 Index 10-Axis Twin Turret CNC Turn/Mill Center, MDL. G200BY, 65mm (2.5") Bar Capacity, 2-Turrets (14 Tools/Turret), 6,000 RPM, Full C-Axis Main/Sub Spindle, Rotary & Stationary Tooling, Turret 1 With Y/B-Axis Option For Inclined, Off-Center Drilling And Milling And Heavy Milling Spindle W/ 6-Tool Magazine For Additional Milling Spindles, Gantry Workpiece Receiving Attachment For Workpiece Loading And Unloading, 12' Index MBL Magazine Bar Loader, Index System C200-4D CNC Control

2000 Index 7-Axis Twin Turret CNC Turn/Mill Center, MDL. G200 Compact, 60mm (2-3/8") Bar Capacity, 6,000 RPM, 2-Turrets (14 Tools/Turret), 7-Axis, Full C-Axis Main/Sub Spindle, Rotary & Stationary Tooling, 12' Index MBL Magazine Bar Loader, Index C200-4D CNC Control

1998 Index Multi-Axis Twin Turret CNC Turning Center, MDL. ABC Speedline, 65mm (2.5") Bar Capacity, 6,000 RPM, 2-Turrets (8 & 6 Tools), C-Axis, Sub-Spindle, Up To 5-Backworking Tools, Cross Drilling, Polygon/Thread Milling Attachment, Chip Conveyor, 12' Index MBL Magazine Bar Loader, Index System C200-4D CNC Control

Miyano CNC Turning Center, MDL. ANC 35S, Live Tools, Sub-Spindle, Exit Conveyor, Chip Conveyor, LNS Hydrobar 6.36.HS.5.2 Hydraulic Bar Feed, Fanuc CNC Control, S/N NR350062

Miyano CNC Turning Center, MDL. BNC-34T, B-Axis, Parts Catcher, Miyano Bar Feed, Fanuc OT CNC Control, S/N BN30363T

BAR FEEDERS TO BE OFFERED AS A PACKAGE AS WELL AS SEPARATELY

(26) MULTI-SPINDLE AUTOMATICS

Wickman 3 1/4" 6-Spindle Automatic Screw Machine, Drill Saddles, Cross Slide Tool Holders, Oil Guarding, Stock Reel and Stand, Chip Conveyor, Cams And Gears as Mounted, S/N 16323

Wickman 2 5/8" 6-Spindle Automatic Screw Machine, Drill Saddles, Cross Slide Tool Holders, Oil Guarding, Stock Reel and Stand, Chip Conveyor, Cams and Gears as Mounted, S/N 16507

(2) Wickman 2 1/4" 6-Spindle Automatic Screw Machine, Universal Threading, Drill Saddles, Cross Slide Tool Holders, Oil Guarding, Stock Reel and Stand, Chip Conveyor, Cams and Gears as Mounted, S/N 13536, 15759

Wickman 1 3/4" 6-Spindle Automatic Screw Machine, Universal Threading, Drill Saddles, Cross Slide Tool Holders, Oil Guarding, Stock Reel and Stand, Chip Conveyor, Cams And Gears as Mounted, S/N 11590

Wickman 1" 6-Spindle Automatic Screw Machine, Universal Threading, Pick-Up, Acc. Drilling, Drill Saddles, Cross Slide Tool Holders, Oil Guarding, Stock Reel and Stand, Chip Conveyor, Cams and Gears as Mounted, S/N 10667

Large Qty of Wickman Tooling, Gears, Collets, Tool Holders, Feed Fingers, Repair Parts

Davenport MDL. B "Oversized" Multi-Spindle 3/4" Automatic Screw Machine, 5-Spindle, Noise Tamer Sound Enclosure, 4th Pos. Adj. Slide, Threading, Pick-Off, Spindle Stopping, Chip Conveyor, Stock Reel and Stand, S/N 5130

Davenport MDL. B "Oversized" Multi-Spindle 3/4" Automatic Screw Machine, 5-Spindle, Noise Tamer Sound Enclosure, 4th Pos. Adj. Slide, Threading, Deburr, Chip Conveyor, Stock Reel and Stand, S/N 6792

Davenport MDL. B "Oversized" Multi-Spindle 3/4" Automatic Screw Machine, 5-Spindle, Noise Tamer Sound Enclosure, Pickoff, Threading, 4th Pos. Adj. Slide, Chip Conveyor, Stock Reel and Stand, S/N 7351

Davenport MDL. B "Oversized" Multi-Spindle 3/4" Automatic Screw Machine, 5-Spindle, Noise Tamer Sound Enclosure, Pickoff, Threading, Chip Conveyor, Stock Reel and Stand, S/N 7346

Davenport MDL. B "Oversized" Multi-Spindle 3/4" Automatic Screw Machine, 5-Spindle, Longbed, Pickoff, Threading, 4th Pos. Adj. Slide, Chip Conveyor, Stock Reel and Stand, S/N 85371

Davenport MDL. B "Oversized" Multi-Spindle 3/4" Automatic Screw Machine, 5-Spindle, Pickoff, Threading, Deburr, 4th Pos. Adj. Slide, Chip Conveyor, Stock Reel and Stand, S/N 7849

Davenport MDL. B "Oversized" Multi-Spindle 3/4" Automatic Screw Machine, 5-Spindle, Pickoff, Threading, Deburr, Chip Conveyor, Stock Reel and Stand, S/N 8501

Large Qty of Davenport Tooling, Gears, Thread Rolling Attachments, Slides, Cams, Collets

MULTI-SPINDLE AUTOMATICS CONTINUES ON PG 6

WEBCAST

Can't make it to the auction in person? Bid live online at www.BIDITUP.com

FOR LEASE & FINANCE SERVICES - BIDITUP CAPITAL CORPORATION

CALL 818.508.7034

MULTI-SPINDLE AUTOMATIC SCREW MACHINES



Wickman 3 1/4" 6-Spindle Automatic Screw Machine



Wickman 2 5/8" 6-Spindle Automatic Screw Machine



Wickman 2 1/4" 6-Spindle Automatic Screw Machine



Davenport 3/4" Oversized Multi-Spindle Automatic Screw Machine



Acme-Gridley 2" Multi-Spindle Automatic Screw Machine



Acme-Gridley 1 1/4" Multi-Spindle Automatic Screw Machine

MULTI-SPINDLE AUTOMATICS, BROACHING MACHINES, CNC LATHE



Ty Miles 5 Ton Vertical Broaching Machine



Ty Miles 2 Ton Vertical Broaching Machine



Ty Miles Vertical Broaching Machine



Adlock- Shipley Horizontal Mill



Chien Yeh Engine Lathe

**LEASE/FINANCING
AVAILABLE DIRECT FROM
BIDITUP Capital Corporation**

See Page 11 for Details

(26) MULTI-SPINDLE AUTOMATICS Continued...

Acme-Gridley 2" Multi-Spindle Automatic Screw Machine, MDL. RAS-6, Universal Threading, 5-Cross Slides, Cross Slide Tool Holders, Drill Saddles, Oil Guards, Stock Reel and Stand, Chip Conveyor, Cams and Gears as Mounted, S/N 41329

Acme-Gridley 2" Multi-Spindle Automatic Screw Machine, MDL. RAS-6, Threading Clutch in 4th, Pickoff, 5-Cross Slides, Cross Slide Tool Holders, Drill Saddles, Oil Guards, Stock Reel and Stand, Chip Conveyor, Cams and Gears as Mounted, S/N 40013-A

Acme-Gridley 2" Multi-Spindle Automatic Screw Machine, MDL. RB-6, 6-Slides, Universal Threading, Acc. Recessing, Cross Slide Tool Holders, Drill Saddles, Oil Guards, Stock Reel and Stand, Chip Conveyor, Cams and Gears as Mounted, S/N 41297

Acme-Gridley 2" Multi-Spindle Automatic Screw Machine, MDL. RB-6, 5-Cross Slides, Cross Slide Tool Holders, Universal Threading In 4th, Drill Saddles, Oil Guarding, Stock Reel and Stand, Chip Conveyor, Cams and Gears as Mounted, S/N 41379

Acme-Gridley 2" Multi-Spindle Automatic Screw Machine, MDL. RB-6, 5-Cross Slides, Recessing, Drill Saddles, Cross Slide Tool Holders, Oil Guards, Stock Reel and Stand, Chip Conveyor, Cams and Gears as Mounted, S/N 41818

(2) Acme-Gridley 1 1/4" Multi-Spindle Automatic Screw Machine, MDL. RA-6, Universal Threading in 4th, Recessing, 5-Cross Slides, Cross Slide Tool Holders, Drill Saddles, Oil Guards, Stock Reel and Stand, Chip Conveyor, Cams and Gears as Mounted, S/N 71910-B, B-70011RB

Acme-Gridley 1 1/4" Multi-Spindle Automatic Screw Machine, MDL. RA-6, Drill Saddles, Cross Slide Tool Holders, Oil Guards, 4-Cross Slides, Stock Reel and Stand, Chip Conveyor, Cams and Gears as Mounted, S/N 71141

Acme-Gridley 1 1/4" Multi-Spindle Automatic Screw Machine, MDL. RA-6, Pickoff, Threading Clutch, Cross Slide Tool Holders, Drill Saddles, Oil Guards, 5-Cross Slides, Stock Reel and Stand, Chip Conveyor, Cams and Gears as Mounted, S/N 71216

Acme-Gridley 1 1/4" Multi-Spindle Automatic Screw Machine, MDL. RA-6, 5-Cross Slides, Cross Slide Tool Holders, Drill Saddles, Oil Guards, Stock Reel and Stand, Chip Conveyor, Cams and Gears as Mounted, S/N 71522-A

Acme-Gridley 1 1/4" Multi-Spindle Automatic Screw Machine, MDL. RA-6, 5-Cross Slides, Universal Threading in 4th, Drill Saddles, Cross Slide Tool Holders, Oil Guards, Stock Reel and Stand, Chip Conveyor, Cams and Gears as Mounted, S/N 71103

Acme-Gridley 1 1/4" Multi-Spindle Automatic Screw Machine, MDL. RA-6, Parts Machine, Slides Missing, Stock Reel and Stand, Chip Conveyor, Cams and Gears as Mounted, S/N 71287

Acme-Gridley 9/16" Multi-Spindle Automatic Screw Machine, MDL. RA-6, Pickoff, Pickoff Stopping, Rear Slotting For Pickoff, Cross Slide Tool Holders, Drill Saddles, Oil Guarding, Stock Reel and Stand, Chip Conveyor, Cams and Gears as Mounted, S/N A23083

Acme Tooling, Winters Thread Rolling Attachments, Cams, Gears, Collets, Feed Fingers, Recessing Attachments, Repair Parts

**Automatic Screw Machines in Immaculate Condition
w/ Many Late Model Acme-Gridleys Available**

BROACHING MACHINES

Ty Miles 5-Ton Vertical Hydraulic Broaching Machine, MDL. MBLD-10-24-102R, S/N 790835

Ty Miles 2-Ton Vertical Hydraulic Broaching Machine, MDL. MBLD-4-24-150R, S/N 831228

Ty Miles Vertical Hydraulic Broaching Machine, MDL. MBLD-10-24-150R Rabbit, S/N 801244

TO SCHEDULE AN AUCTION OR APPRAISAL

CALL 818.508.7034

CENTERLESS GRINDERS, CYLINDRICAL GRINDER, HYDRAULIC SURFACE GRINDERS, LATHES



Cincinnati Centerless Grinder



BSA Centerless Grinder



BMW Cylindrical Grinder



Kent Hydraulic Surface Grinder



Norton Hydraulic Surface Grinder



Boyar-Schultz Hydraulic Surface Grinder



Chevalier Hydraulic Surface Grinder



Hardinge CNC Precision Lathe



Hardinge DV 59 Precision Lathe



Herbert Turret Lathe

DIRECTIONS

From: Lester B. Pearson Intl Airport, Toronto, ON (YYZ)
(Approx. 6 Miles From Auction Site)

Start going toward the Airport Exit on Terminal Access Road. Continue on Aeroquay Cres. Take ramp onto Jetliner Road. Head right on Bresler Dr. Turn right on Campus Road. Campus Road becomes Fasken Dr. Turn left on Carlingview Dr. Turn left on Disco Road. Disco Road becomes Goreway Dr. Turn right on Nashua Dr. Arrive at 3857 Nashua Dr.

From: Lester B. Pearson Intl Airport, Toronto, ON (YYZ)
(Approx. 6 Miles From Auction Site)

Start going toward the Airport Exit on BATHURST ST. Turn left on Dundas St W. Turn right on Keele St becomes Weston Road. Take ramp onto Black Creek Dr. Black Creek Dr becomes ON-400. Take ramp onto ON-401. ON-401 becomes ON-409. Take ramp onto ON-427. Take ramp toward Rexdale Blvd. Turn left on Rexdale Blvd. Rexdale Blvd becomes Derry Road E. Turn left on Rexwood Road. Turn left on Nashua Dr. Arrive at 3857 Nashua Dr.

LODGING

Days Hotel & Conference Center
905-677-7331

Hampton Inn & Suites Toronto Airport
905-671-4730

Quality Suites Toronto Airport
416-674-8442

**REGISTER AT www.BIDITUP.com AND RECEIVE
UPCOMING AUCTION UPDATES VIA EMAIL!**

LATHES, CENTERLESS GRINDERS, CYLINDRICAL GRINDERS, HYDRAULIC SURFACE GRINDERS, HORIZONTAL MILLS, VERTICAL & HORIZONTAL BAND SAWS, TOOL PRESETTERS, PIN PUNCH, CUTTERS / GRINDERS



Startrite Vertical Band Saw



Rush Cutter Grinder



Citizen TP 1000



Citizen Tool Presetter



Tool Presetter



Disk Grinder



Double End Grinder



Barker H-Mill



Drill Press



Drill Press



Solid Drill

CNC LATHE

Hardinge Super Precision CNC Lathe, Fagor CNC Control

LATHES

1984 Chien Yeh Engine Lathe, MDL.CY405 100G, 17" Swing, 36" Centers, 3-Jaw Chuck, 650-1200 RPM, Tailstock, 4-Post Tool Holder

Chien Yeh Engine Lathe, MDL. CY405 x 1000G, 17" Swing, 36" Centers, 3-Jaw Chuck, 65 - 1200 RPM, Tailstock, Coolant, 4-Post Tool Holder, S/N 83058

(2) Hardinge Precision Lathe, MDL. DSM-59-R, Lipe MDL. 125 Rollway Pneumatic Bar Feed

Hardinge Precision Lathe, MDL. DV-59-DSM59, S/N DV-59-19364-T

Hardinge Super Precision Lathe, MDL. DSM

Hardinge Super Precision Lathe, W/Cutter

Hardinge Super Precision Lathe, MDL. VBS-R

Brown & Sharp Small Turret Lathe, S/N 540-0-310

Herbert Turret Lathe, MDL. 2D

CENTERLESS GRINDERS

(2) Cincinnati Centerless Grinder, MDL. 2EA, Auto Feed, S/N 2HB-2K4-75, 2HB-2KA-279

BSA Centerless Grinder, MDL. 4G, S/N 4G-6517-407-7

CYLINDRICAL GRINDER

WMW Cylindrical Grinder, MDL. SWU 2501, S/N 87/74

HYDRAULIC SURFACE GRINDERS

Kent Hydraulic Surface Grinder, MDL. KGS-6165, 6" x 14" Kurt Magnetic Chuck, Dust Collection System, S/N 9709100 Boyar Hydraulic Surface Grinder, MDL. 591, 6" x 14" Eclipse Magnetic Chuck

Boyar-Schultz Hydraulic Surface Grinder, MDL. 6112, 6" x 12" Magnetic Chuck, S/N 20931

Chevalier Hydraulic Surface Grinder, MDL. FSG 612, 6" x 12" Walker Magnetic Chuck, S/N 013289

Norton Hydraulic Surface Grinder, MDL. 6 x 12TS, 6" x 12" Magnetic Chuck, S/N 5991

HORIZONTAL MILLS

Adlock-Shipley Horizontal Milling Machine, MDL. 2E, 41-900 RPM

SMS Barker Horizontal Mill With Cabinet

Barker Horizontal Mill & Cabinet

VERTICAL BAND SAW

Startrite Vertical Band Saw, MDL. 147, 11-1/2" x 6" Throat, 16" x 16" Table, S/N A845

HORIZONTAL BAND SAW

Craftex Horizontal Band Saw

TOOL PRESETTERS

(3) Citizen Tool Presetter, MDL. TP1000, S/N 81202, 4172, 3001

Citizen Tool Presetter, MDL. BPK-1032, S/N 014

Hydromat Tool Presetter, MDL. URL103-960H125, Accurite DRO Tool Presetter

PIN PPUNCH

1999 Technifor Pneumatic Pin Punch, MDL. CN101, S/N 00639

CUTTERS/GRINDERS

Rush Tool Grinder, MDL. 252, Gasti Hydraulic Chuck Control, Hengster Control, Coolant, Work Light, S/N 2273(98)

Baldor Double End Pedestal Grinder, MDL. 332B, 3/4 HP, Wire Brush & Buffer

Baldor Double End Pedestal Grinder, MDL. 712, W/ Brush & Stone, 1/2 HP

Leeson 10" Disk Grinder, 1/2 HP

Double End Pedestal Grinder

TO SCHEDULE AN AUCTION OR APPRAISAL

CALL 818.508.7034

CHIP PROCESSING EQUIPMENT, PARTS WASHER, MEZZANINE



Intersource Automatic Chip Processing System



Barret Oil Clarifuge



Bowden Liquid Turbo-Charger Aqueous Parts Washer



Storage Mezzanine



Storage Mezzanine



Storage Mezzanine

BIDITUP AUCTIONS & APPRAISALS WORLDWIDE

www.BIDITUP.com

DRILL PRESSES, CHIP PROCESSING EQUIPMENT, PARTS WASHING SYSTEM, INSPECTION, DUST/FUME COLLECTORS, ROLLING STOCK



Mitutoyo PH3500
Profile Projector



Detronic Optical
Comparator



Detronic Optical
Comparator



Inspection Equipment



Hardness Tester



Plug Gauges



Technifor Pin Punch



Granite Inspection Table



Inspection Equipment



Digital Inspection



Digital Inspection Scale



Digital Inspection Scale

DRILL PRESSES

Walker Turner Drill Press, MDL 17, 17" x 12-1/2" Table

Rockwell Pedestal Drill Press, MDL 70-6 x 10, S/N 1740196

Canadian 15" Pedestal Drill Press

Buffalo 15" Pedestal Drill Press

Delta Pedestal Drill Press, S/N 14-060L

Ferrovolt Shaft Drill

Solid Drill, MDL TB6

Solid Drill, MDL TB10

CHIP PROCESSING EQUIPMENT

Intersource Automatic Chip Processing System, Dump Loading Station, Parts Separator, 30" Wringer, Barret Clarifuge, Conveyors, Oil Holding Tanks, S/N 5103508

Barrett Chip Wringer, MDL 1100, 3,000 Lb., S/N 110016-J

PARTS WASHING SYSTEM

Bowden Liquid Turbo Charger Parts Washing System, MDL CRB-4-SM-160, (4) Basket Loading, (8) Extra Baskets, Allen Bradley Panel View 550 Control, (4) Wash Tank Stages, Dryer

INSPECTION

Mitutoyo 14" Profile Projector/Comparator, MDL PH-3500, Mitutoyo Micropak 2 Control w/ Edge Find, S/N 660114

(2) Deltronic Optical Comparator, MDL Image Master, Deltronic 612-R, DRO w/ Edge Find

Wilson Rockwell, MDL 3TT ARB Hardness Tester

Mitutoyo Digital Calibrators, MDL 215-416

Sylvac Digital Height Gauges, MDL J412

Weightronix 100 LB Digital Bench Scale, MDL PC802

Weightronix 20 KG Scale, MDL PC2000

Kilotech Digital Counting Scale, MDL SC25P

Tec Digital Counting Scale, MDL SR-1103R

2' x 3' x 6" Granite Surface Table

Metroplate Granite Surface Plate 2' x 18" x 3"

Frank Cox Granite Plate 12" x 18" x 4"

Gauge Pins

Inspection Gauges

DUST/FUME COLLECTORS

(2) Torrit Dust Collector, MDL 75, S/N E3165, L1309

Donaldson Torrit Dust Collector, MDL 75

(3) Large Smog Hog Fume Extractor

(3) Smog Hog Fume Extractor

Maltel Control Panel For Fume Extractors

ROLLING STOCK

Toyota 5,000 LB Electric Fork Lift, MDL 5FBCU25, W/Charger

Skyjack 400 LB Scissor Lift, MDL SJ3220

Clarke Floor Scrubber, MDL Encore

AIR COMPRESSORS/DRYER, FACILITIES, AND MUCH MORE!

AIR COMPRESSORS/DRYER

(2) Compair 50-HP Air Compressor, MDL Hydrovane 218

Techquip 3-HP Air Compressor

Kellogg Air Dryer

FACILITIES

Schafer Mezzanine Shelving System, Main Aisles: 625 LB/SQFT, Shelving Type R3000, Work Aisle: 625 LB/SQFT, Shelf Bay: 3000 LB, Dividing Shelf: 200 LB, S/N R3000

(2) Mezzanine Offices 18' x 30', Roll Up Door, Double Door

Demag 1-Ton Single Beam Overhead Hoist, 30' Span,

1,000 LB Pneumatic Jib Crane

(3) JVC 600V/200V Transformer

(4) JVC 600/208V 15 KVA Transformer

(3) Marcus 600V/208 25 KVA Transformer

Graymills Pumping System

MISCELLANEOUS

Stanley Bostich Kick Stapler, Sarmiel Strapping Machine, MDL SS-661, Hitachi Abrasive Saw, (9) Arbor Presses, Horizontal Drill & Motor, Bench Vises, Hand Tools, Torch Sets, Metal Work Benches, Metal Tables, Chairs, Work Benches W/Lights, Chairs, Storage Desk, 5-Draw File Cabinet, 8-Drawer Tool Chest, 3-Draw Cabinets, Vertical Storage Boxes, Office Equipment

Leasing & Financing Services Now Available From — BIDITUP Capital Corporation —

BIDITUP with Confidence!

Preserve your cash and short term credit lines. Consider BIDITUP Capital Corporation. We're able to offer up to 100% financing, plus coverage of soft costs, sales tax, rigging and shipping expenses.

- ▼ Fast Turnaround
- ▼ Competitive Rates
- ▼ Minimal Paperwork
- ▼ All Credit Considered

We finance all types of new and used machinery.

Equipment including:

- Metalworking
- Industrial
- Construction
- Woodworking
- Printed Circuit Board, Fiber Optics, & TeleCom
- Auto
- Printing
- Foundry
- Plastics and Molding
- Material Handling
- And More!

Call 818.508.7034 for complete information about how BIDITUP Capital Corporation can help you today.

BIDITUP Capital Corporation is a wholly-owned subsidiary of BIDITUP Auctions & Appraisals Worldwide, a global leader in asset recovery and conversion since 1977. BIDITUP Capital Corporation understands the value of industrial and high-tech assets.

"Knowing Asset Value is Our Business"

BIDITUPTM
CAPITAL CORPORATION

5000 LB



Toyota Fork Lift



Skyjack Scissor Lift



Smog Hog



Clarke Floor Scrubber



Mezzanine Office



Ferro For Battery Charger



Office Equipment



1 Ton Overhead Hoist



Arbor Presses



Grinders/Band Saw/Chop Saw



Air Compressor



Tool Chest Sample



1000 LB Chain

BIDITUP AUCTIONS & APPRAISALS WORLDWIDE

www.BIDITUP.com

**LIVE
ON-SITE &
WEBCAST**

MACHINERY AUCTION

March 28, 2006

**MULTI-MILLION DOLLAR, LATE MODEL HI-PRECISION
CNC SWISS & MULTI-SPINDLE AUTOMATICS, CNC
MULTI-AXIS TURNING, HYDROMATS, BROACHING
& MACHINING FACILITY**

— *GSS Manufacturing Corporation - Formerly Known as Jancee Screw Products* —

AUCTION

Tuesday, March 28, 2006
10:00 AM EST

PREVIEW

Monday, March 27, 2006
9:00 AM to 4:00 PM EST

LOCATION

3857 Nashua Dr
Mississauga, Ontario L4V 1R3 (Canada)
(See pg 7 for Directions & Lodging)

FOR THE COMPLETE TERMS & CONDITIONS OF THIS AUCTION
Please visit our website - www.BIDITUP.com

NOW OFFERING IN-HOUSE FINANCING & LEASING. Call 818.508.7034



Hydromat HW25-12 Rotary Transfer Machine



Star SA-12 460J CNC Screw Machine

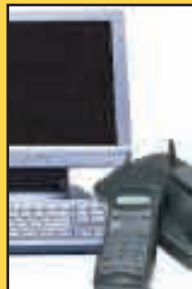
FEATURED AUCTION

**MULTI-MILLION DOLLAR, LATE
MODEL HI-PRECISION CNC SWISS &
MULTI-SPINDLE AUTOMATICS, CNC
MULTI-AXIS TURNING, HYDROMATS,
BROACHING & MACHINING FACILITY**

*GSS Manufacturing Corporation
Formerly Known as Jancee Screw Products*

**Tuesday, March 28, 2006
Mississauga, Ontario (Canada)**

For a Complete Listing of Upcoming Auctions,
Visit www.BIDITUP.com. Register Online and Receive
Auction Updates & Information via E-Mail.



WEBCAST

Can't attend the auction in person? You can participate and bid in real time via the Internet. Preview assets with detailed digital photos, lot catalogs, and in-depth descriptions.

For more information, visit
www.BIDITUP.com

Please note, all webcast participants must submit a 25% deposit and signed registration forms no later than 24 hours before a sale.



Index G200BY CNC Turn/Mill Center



Citizen Cincom F20 CNC Screw Machine



Wickman 3 1/4" 6-Spindle Automatic Screw Machine

MACHINERY AUCTION, LOOK INSIDE!

**ATTENTION:
PLANT MANAGER OR EQUIPMENT BUYER**